

Accura[®] ClearVue[™]

High clarity plastic for a multitude of applications



Technical Data

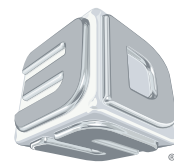
Post-Cured Material			
Measurement	Condition	Metric	U.S.
Tensile Strength (MPa/PSI)	ASTM D 638	41 - 46	5950-6670
Tensile Modulus (MPa/KSI)	ASTM D 638	2030-2220	294-322
Elongation at Break	ASTM D 638	4 - 7 %	4 - 6 %
Flexural Strength (MPa/PSI)	ASTM D 790	53-67	7690-9720
Flexural Modulus (MPa/KSI)	ASTM D 790	1560-2040	226-296
Impact Strength (J/m /Ft-lbs/in)	ASTM D 256	43-67	0.81-1.26
Heat Deflection Temperature	ASTM D 648 @ 66 PSI @ 264 PSI	46 °C	115 °F
		41 °C	106 °F
Coefficient of Thermal Expansion (CTE)	ASTM E 831-93 < 35 °C > 60 °C	70	70
		160	160
Glass Transition (Tg)	DMA, E''	56 °C	133 °F
Shore D		84	84

Liquid Material

Measurement	Condition	Value
Viscosity	@ 30 °C (86 °F)	235-260 cps
Penetration Depth (Dp)		6.1 mils
Critical Exposure (Ec)		9.5 mJ/cm ²
Color		Clear
Solid Density	@ 25 °C (77 °F)	1.17 g/cm ³
Liquid Density	@ 28 °C (82 °F)	1.10 g/cm ³

Features

- Headlamps, bottles and transparent assemblies
- Rigid and tough
- Excellent humidity/moisture resistance
- Capable of meeting UPS Class VI



3DSYSTEMS[®]

3D Systems Corporation Tel: +1 803.326.3900
333 Three D Systems Circle NYSE: DDD
Rock Hill, SC 29730, USA www.3dsystems.com

MANUFACTURING THE FUTURE[™]

Warranty/Disclaimer: The performance characteristics of these products may vary according to product application, operating conditions, or with end use. 3D Systems makes no warranties of any type, express or implied, including, but not limited to, the warranties of merchantability or fitness for a particular use.

© 2015 by 3D Systems, Inc. All rights reserved. Specifications subject to change without notice. ClearVue is a trademark, the 3D logo and Accura are registered trademarks of 3D Systems, Inc.